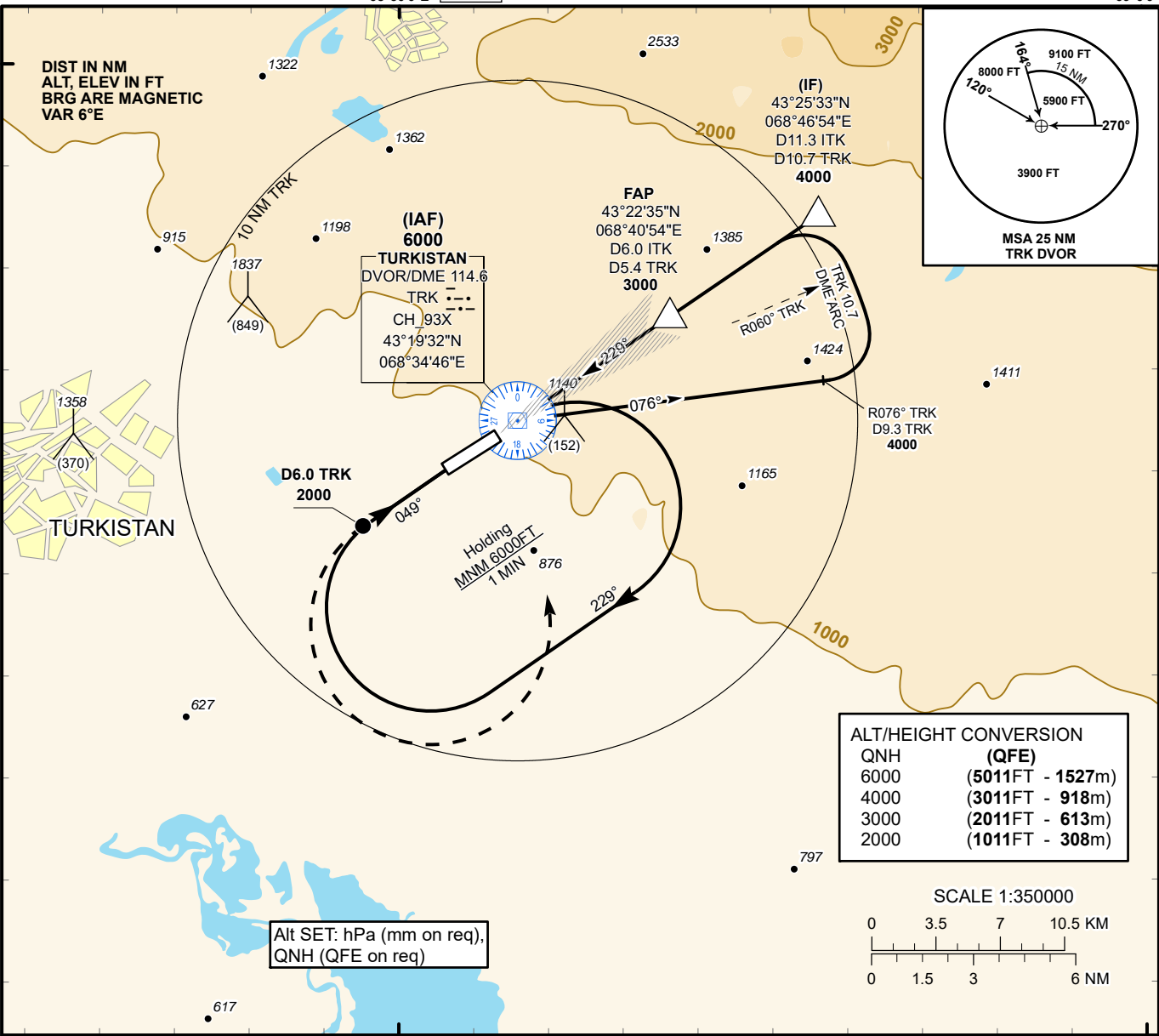


INSTRUMENT APPROACH
CHART
ICAO

AERODROME ELEV **989 FT**
HEIGHTS RELATED TO
THR RWY 23 ELEV **989 FT**

TURKISTAN TOWER 131.3
TURKISTAN ATIS (EN) 124.4
TURKISTAN ATIS (RU) 118.3

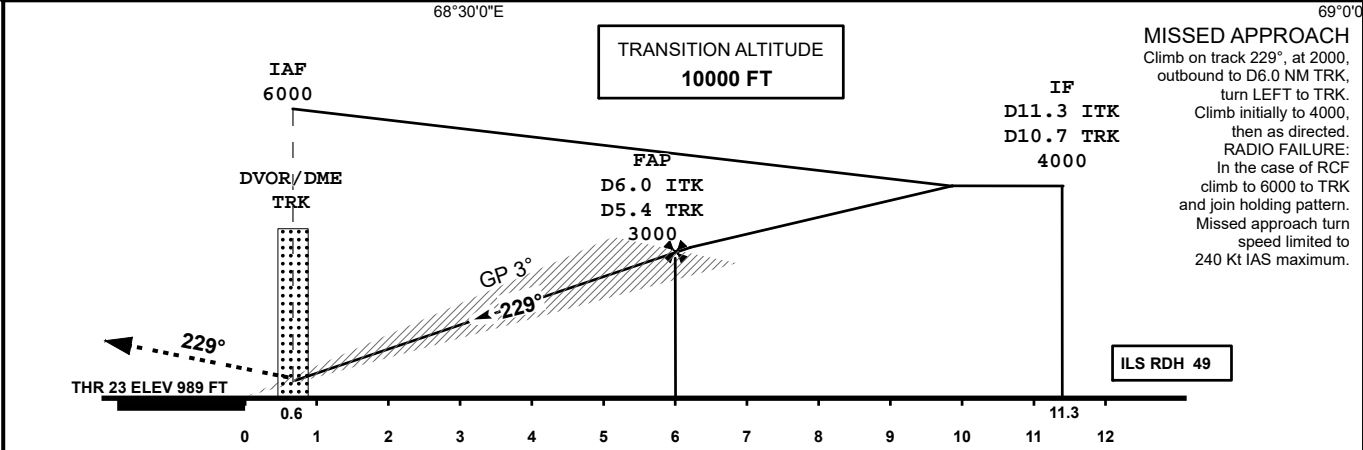
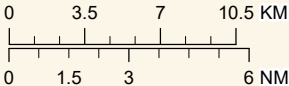
TURKISTAN
ILS/DME
RWY 23



Alt SET: hPa (mm on req),
QNH (QFE on req)

ALT/HEIGHT CONVERSION	
QNH	(QFE)
6000	(5011FT - 1527m)
4000	(3011FT - 918m)
3000	(2011FT - 613m)
2000	(1011FT - 308m)

SCALE 1:350000



MISSED APPROACH
Climb on track 229°, at 2000,
outbound to D6.0 NM TRK,
turn LEFT to TRK.
Climb initially to 4000,
then as directed.
RADIO FAILURE:
In the case of RCF
climb to 6000 to TRK
and join holding pattern.
Missed approach turn
speed limited to
240 Kt IAS maximum.

ILS RDH 49

Aircraft Category		A	B	C	D	DIST to THR DME ITK	NM	6.0	5.0	4.0	3.0	2.0	1.0
Straight-in Approach OCA/H						DME TRK	NM	5.4	4.4	3.4	2.4	1.4	0.4
	ILS	1194(205)	1194(205)	1194(205)	1194(205)	ALTITUDE	FT	3000	2652	2325	2001	1678	1357
						HEIGHT	FT	2011	1663	1336	1012	689	368
DME ITK ZERO RANGED TO THR RWY 23													
Aerodrome Operating Minima DH ft x RVR(CMV)						GS	Kt	80	100	120	140	160	180
						Desc.Rate(5.2%)	ft/min	420	530	630	740	840	950

CHANGE: Add ATIS, editorial.

TURKISTAN
ILS/DME RWY23

AERONAUTICAL DATA TABULATION

ILS approach to RWY23 from TRK DVOR/DME	
Fix/point	Coordinates
TRK DVOR/DME	43° 19' 32.3"N 068° 34' 46.1"E
(IF) D11.3 ITK, D10.7 TRK	43° 25' 33.4"N 068° 46' 54.4"E
(FAP) D6.0 ITK, D5.4 TRK	43° 22' 35.1"N 068° 40' 54.0"E
THR RWY23	43° 19' 10.27"N 068° 34' 01.98"E
ITK LLZ	43° 18' 00.6"N 068° 31' 42.1"E